

LEGEND

- - IRON PIN FOUND
- - IRON PIN SET
- - CORNER NEITHER SET NOR FOUND

LINE CHART
BEARINGS & DISTANCES
AROUND DRAINFIELD EASEMENTS

E-F	S82°05'45"E	105.05
F-G	S06°20'35"W	121.46
G-H	N80°31'11"W	76.91
H-E	N06°52'31"W	123.38
A-B	S49°13'02"E	126.34
B-C	S54°13'25"E	105.29
C-D	N53°30'57"W	105.20
D-A	N42°21'41"E	110.35

BEARINGS & DISTANCES FROM POINT 1 -
POINT 43 ALONG CREEKS AND THROUGH
PONDS. BEARINGS & DISTANCES SHOWN
ARE FOR COMPUTATION OF AREA ONLY.

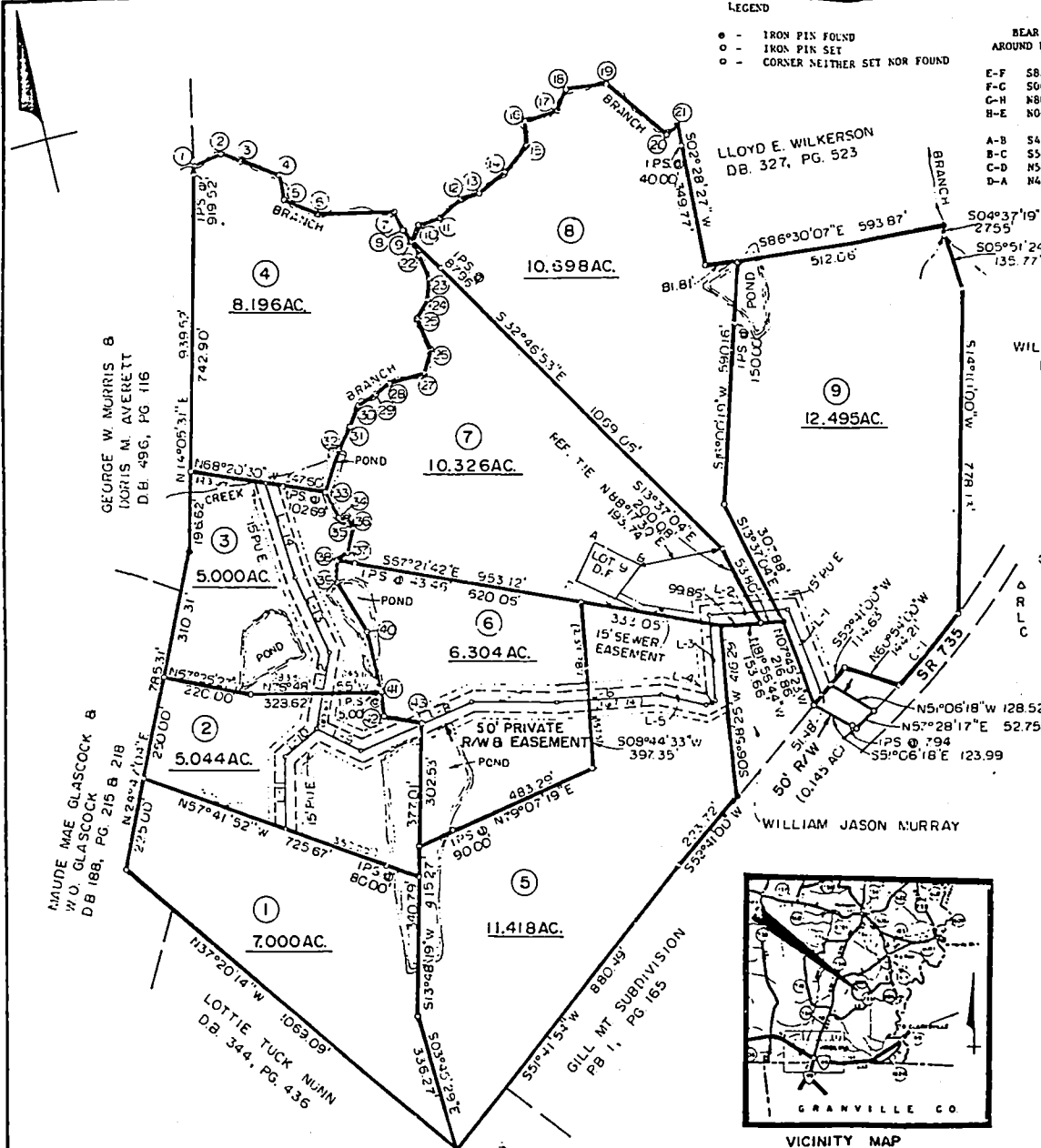
1-2	N84°29'58"E	70.87
2-3	S58°56'53"E	53.75
3-4	S58°15'19"E	99.29
4-5	S03°03'34"W	63.66
5-6	S57°02'48"E	91.23
6-7	S79°01'19"E	188.34
7-8	S11°36'51"E	55.06
8-9	S27°39'31"E	27.33
9-10	N44°45'18"E	38.61
10-11	N85°23'17"E	53.86
11-12	N60°02'28"E	67.54
12-13	N83°07'32"E	51.01
13-14	N62°46'55"E	81.61
14-15	N51°13'29"E	86.91
15-16	N07°33'05"E	55.57
16-17	N85°42'44"E	84.96
17-18	N35°08'17"E	52.74
18-19	S85°06'09"E	103.11
19-20	S36°41'00"E	193.66
20-21	N62°34'01"E	35.66
9-22	S13°17'54"E	67.10
22-23	S08°22'56"E	58.84
23-24	S13°24'21"W	52.56
24-25	S43°29'21"W	50.66
25-26	S13°52'29"E	82.69
26-27	S33°51'53"W	62.13
27-28	S88°05'21"W	89.45
28-29	S62°36'51"W	41.82
29-30	S71°10'06"W	49.58
30-31	S36°15'43"W	55.19
31-32	S38°34'58"W	63.72
32-33	S29°37'23"W	105.97
33-34	S11°44'47"E	68.11
34-35	S75°25'44"E	23.12
35-36	S27°56'52"E	21.95
36-37	S24°44'07"W	69.77
37-38	S77°48'36"W	30.78
38-39	S11°36'32"E	50.47
39-40	S16°22'53"E	145.60
40-41	S01°12'29"E	150.44
41-42	S08°02'55"W	55.42
42-43	S67°31'18"E	90.00

LINE CHART
BEARINGS & DISTANCES
ALONG CENTERLINE OF 50' PRIVATE
R/W & EASEMENT FROM L-1 TO L-14

LINE #	BEARING	DISTANCE
L-1	N07°45'23"W	221.59
L-2	N81°56'44"W	198.64
L-3	S06°58'25"W	207.26
L-4	S79°07'19"W	35.39
L-5	N63°46'27"W	107.86
L-6	N80°31'11"W	256.61
L-7	N76°08'59"W	211.17
L-8	S79°19'54"W	293.22
L-9	N50°12'20"W	124.02
L-10	S64°46'59"W	109.35
L-11	S11°54'30"W	179.80
L-12	N22°43'58"E	186.26
L-13	N13°00'35"W	202.41
L-14	N04°09'06"W	237.75

WILLIAM ALBERT MURRAY EST
DB 192, PG. 64

C - 1
Δ = 06°20'43"
R = 2030.19
L = 224.83
C = 22471
S53°27'20"W



Filed for record in the Clerk's Office of the
Circuit Court of Halifax County, Va., on the
2 day of Feb 19 93
F. W. Conner Clerk

- NOTES:
- TOTAL AREA SUBDIVIDED = 76.48 AC.
 - SOURCE OF TITLE: DEED BOOK 586, PAGE 436
(50' R/W: DEED BOOK 586, PAGE 466)
 - THIS SUBDIVISION IS EXEMPTED FROM THE PROVISIONS OF THE SUBDIVISION ORDINANCE AND ACCESS ROADS MUST BE BROUGHT UP TO VIRGINIA STATE DEPARTMENT OF HIGHWAY STANDARDS BY THE FUTURE OWNERS BEFORE THEY CAN BE INCLUDED IN THE STATE HIGHWAY SYSTEM.

THIS PLAT APPROVED BY THE
PLANNING COMMISSION OF
HALIFAX, VIRGINIA THIS
21 DAY OF
February, 19 93
Gerald V. Lovelace
PLANNING DIRECTOR

BERKLEY • HOWELL & ASSOCIATES, P.C.
ENGINEERS • SURVEYORS • PLANNERS
LYNCHBURG, VA.

PLAT OF SURVEY OF	
MOUNTAIN CREEK	
RED BANK DISTRICT	HALIFAX COUNTY, VIRGINIA
SCALE 1" = 200'	DATE: DECEMBER 21, 1992
COMM NO 92831	FB REF 92-25