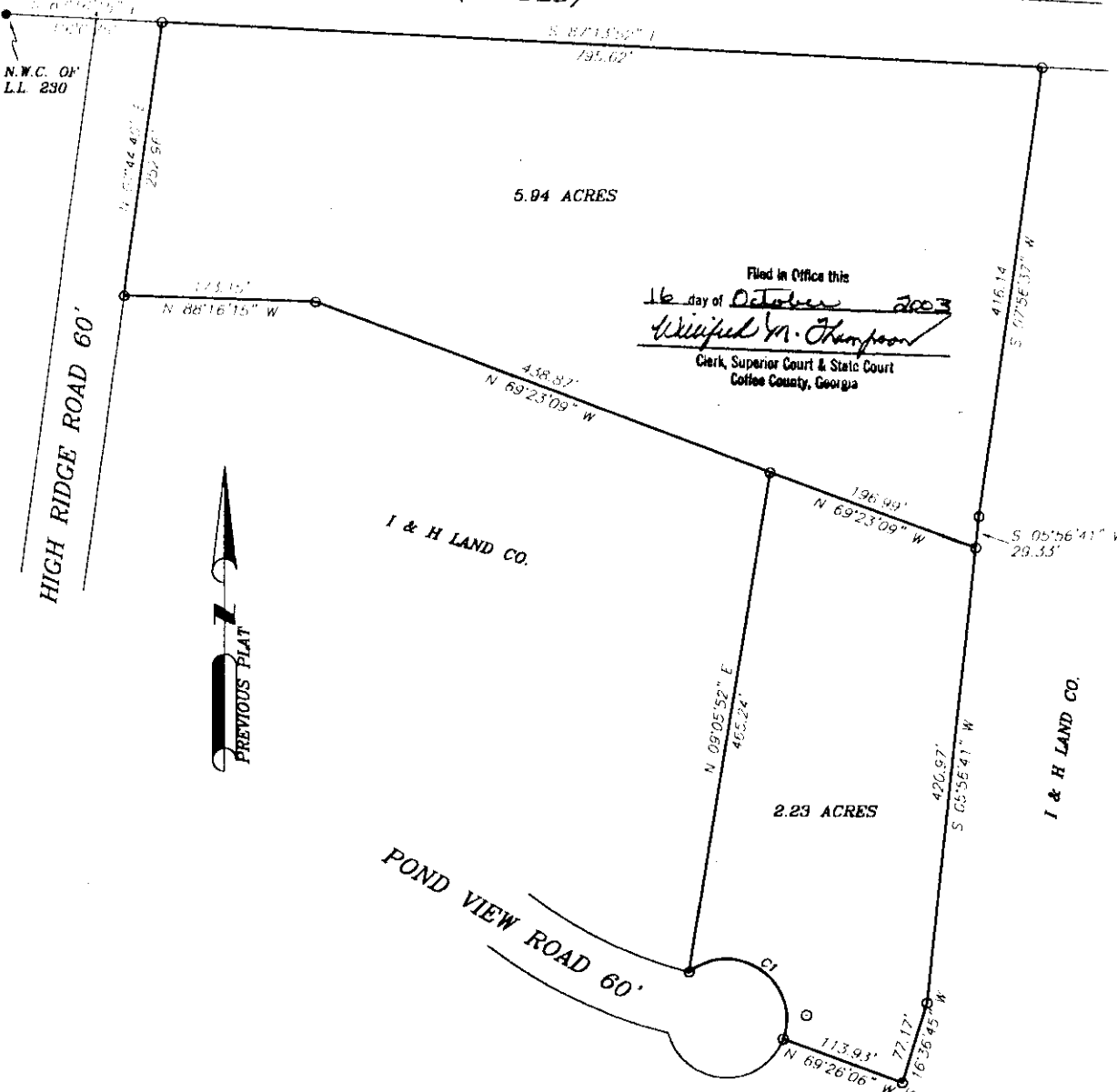


WILL SMITH ROAD (GRADED)



Filed in Office this
 16 day of October 2003
Wesley M. Thompson
 Clerk, Superior Court & State Court
 Coffee County, Georgia



CURVE	RADIUS	ARC LENGTH	CHORD LENGTH	CHORD BEARING	DELTA ANGLE
C1	55.00'	143.03'	108.00'	S 53°56'27\" E	148°00'09\"

I certify this plat to be a true and accurate representation of the land platted and it conforms to the minimum standards and requirements of law, and is suitable for recording.

I certify that in my opinion, the provisions in O.C.G.A. Section 15-06-67(a) does not require approval of this plat by the planning commission.

Everett Tomberlin, the Land Surveyor whose seal is affixed hereto does not guarantee that all easements which may affect this property are shown.



Pursuant to the Development Code of County Georgia, All requirements have been fulfilled and this plat is approved. This _____ Day of _____, 20____. Codes Director, _____ County, Georgia		The equipment used in obtaining the linear and angular measurements used in the preparation of this plat was: NIKON DTM 300 HP48C- TDS DATA COLLECTION 100' STEEL TAPE		SURVEY FOR: I & H LAND CO.	
The field data upon which this plat is based has a closure precision of one foot in 100,000 feet, and an angular error of 0.5\" per angle point, and was adjusted using the _____ rule. This plat has been calculated for closure and has been found to be accurate within one foot in 100,000 feet.		REFERENCES: PLAT: DEED:		Land Lot: 230 G.M.D.: Survey Date: 10-01-2003 Date Drawn: 10-01-2003 Land Dist: 1ST City: Drawn By: ET JOB REF. PRIGGENI County COFFEE State: Georgia Scale: 1\"=100' Checked By: E.T.	
This plat has been recorded in Plat Book 97 Page _____ in the Office of the Clerk of Superior Court of _____ County, Georgia. This _____ day of _____ 20____ Time _____ Clerk of Superior Court				EVERETT TOMBERLIN and ASSOCIATES LAND SURVEYING EVERETT TOMBERLIN REGISTERED LAND SURVEYOR #2822 1144 RADIO STATION ROAD ALMA, GEORGIA 31510 PH. 912-632-8034 FAX 912-632-0734	